

The Catholic Parish of Guildford.



Welcome to St Joseph's Catholic Church



www.CPG.church

12 Eastgate Gardens, Guildford, Surrey, GU1 4AZ
01483 562704 | office@CPG.church

The Arundel and Brighton Diocesan Trust is a Registered Charity No. 252878

September 2016 Edition 3.3

Welcome

As Moderator I am responsible for the Catholic Parish of Guildford and I would like to welcome you to the Community of St Joseph's, one of four communities within the Catholic parish. If you are a new parishioner, I hope that this brochure will help you to find your way into the community life of our parish. If you are an existing parishioner, my hope is that it will help you to find out more about your parish and to participate in the liturgy and community life. If you are a visitor, then please take one away with you - I hope that it has helped to make you feel more welcome.

St Joseph's is a strong, vibrant and diverse community within Guildford and the surrounding area. Over 50 different nationalities worship here. In addition to the rich liturgical programme, there is a wide range of activities that aim to strengthen and deepen faith. The Youth Programme is a particularly strong feature of Guildford and the parish is keen to take forward work on developing the pastoral needs of others within the population, especially older people and those who are sick or disabled.

There is an embedded culture of volunteering to support all aspects of parish life and over 250 parishioners are active as volunteers.

Whether you are new to the parish, have worshipped here for many years or are simply a visitor, please take the time to read this brochure.

May God bless you

Father Colin Wolczak, Parish Priest, Moderator.



Sunday Masses at St Joseph's



8am	This is a popular Mass with many regular attendees. It is a quiet Mass without a choir, but with a prayerful and committed community. This is the only early morning Mass in Guildford parish.
11am	<p>This Mass attracts a large congregation of all ages, including families. Worship at this Mass is enhanced by a choir, under the leadership of a professional choir master/organist, and occasionally the children's orchestra. Coffee & tea is provided in the hall after this Mass, to which all are welcome.</p> <p>Children's Liturgy</p> <p>This takes place in the hall in term time during the first part of the 11am Mass. The children are taken out for their own Liturgy of the Word, music and activities and return to join their parents just before the Offertory. Children's Liturgy is divided into three groups for children aged 3 upwards. For more information see website.</p>
3.30pm	<p>Polish Mass</p> <p>This takes place every 2nd and 4th Sunday of the month.</p>
6pm	This is very well attended and the congregation includes many students and young people. It has a youthful and dynamic feel with vibrant music provided by the 6pm Mass Band.

See the back page of this brochure for all scheduled Masses in the Parish and check the website for variations and special occasions.

Church Opening Times

St Joseph's is usually open on weekdays from about 9am until 5pm. All are welcome for quiet prayer or to light a candle.

History of St Joseph's Catholic Church, Guildford

There is a long history of Catholicism in the Guildford area, but since the Reformation and for many years the only opportunity to hear mass was in a private chapel belonging to the Catholic Weston family. Following Catholic Emancipation in 1829 the first public Mass in Guildford was celebrated in 1857 in a room above Austin Reed in the High Street and the first St Joseph's Church was built in 1860 in Chertsey Street. As the congregation increased in size, it became too small and was replaced by the present church building which was consecrated in 1984.

The Catholic Parish of Guildford.

St Joseph's is one of four churches that together form the Catholic Parish of Guildford served by a single team of clergy. The Parish includes the communities of St Mary's Rydes Hill, Aldershot Rd., Guildford. St Pius X, Laustan Close, Meroo and St Edward the Confessor, Sutton Park. The Catholic Parish of Guildford was formally established in June 2016 by Bishop Richard Moth. The University of Surrey Chaplaincy is also part of the Parish. All four communities are active and welcoming with a wide range of activities and groups for all ages. Many programmes are organised across the Guildford Parish.



The four church communities are administered as a single parish.

The Diocese of Arundel and Brighton

The Catholic Parish of Guildford is part of the Roman Catholic Diocese of Arundel and Brighton. There are 88 parishes within the Diocese. More information can be found at www.dabnet.org.

The Clergy Team



Father Colin Wolczak

Father Colin is the Moderator (parish priest) of the Catholic Parish Guildford. Before the priesthood he was stage manager of the Yvonne Arnaud Theatre in Guildford. He was ordained to the priesthood in 1987 and celebrated his Silver Jubilee in 2012.



Father Sabastian Paul

Father Sabastian joined the Guildford team in September 2016. He was ordained in 2005 in Radom, Poland. He previously served in parishes in Poland: Solec u. Vistula, Kozienice and Libiszow. He has also helped in the UK and Australia, working with scouts, Knights of St. Columba and junior altar servers.



Father Alan Sharpe

Father Alan was ordained in the Church of England for 45 years. He was received into the Catholic Church in 2011 and ordained to the priesthood in July 2012. Father Alan has 5 children and 10 grandchildren.

From time to time visiting priests contribute to the clerical team, particularly at holiday periods. Please help us welcome them to the parish.



Rev John Lamb

John is a Permanent Deacon. He was ordained in 2002 after working as a chartered engineer in industry and then teaching at the University of Surrey. Married for 50 years to Kathleen; he has three sons, two daughters-in-law and 6 grandchildren.



Rev Michael Phillips

A professional soldier for 31 years, latterly as a soldier-diplomat, Michael Phillips's second career was as a museum director. Ordained Deacon in 2009 Michael is based at St Joseph's. Married for 45 years with three daughters, he is Chairman of Farnham Rural Life Centre and a Trustee of the Surrey Churches Preservation Trust.



Rev Michael Walker

Deacon Mike Walker who was Ordained in 2005 is on loan to Guildford from the Archdiocese of Birmingham. He is an accountant who works for the Civil Service. He married Sarah in 1990. Deacon Mike studied Theology at St John's Seminary and the Maryvale Institute in Birmingham.

The Secretarial Team

The parish secretaries work together as a single team for the administration of Guildford Catholic Parish. The parish office is based in The Presbytery, 12 Eastgate Gardens, Guildford, GU1 4AZ, adjacent to St Joseph's Church.

Mercedes Lopez and Sandy Hunt are the parish secretaries. The parish office undertakes a variety of functions including supporting the team of clergy, acting as a point of contact for all enquiries, including booking Mass intentions, and producing the weekly newsletter. A number of volunteers assist with specific functions in the parish office.

Parish Information

A newsletter is distributed on Sundays at Mass and through the website, where up to date information on all parish matters is available.

Website www.cpg.church

Further information can be sought from the Parish office which is located in the Presbytery, adjacent to the Church.

Address St Joseph's Catholic Church,
12 Eastgate Gardens, Guildford, Surrey, GU1 4AZ

Telephone 01483 562704.

Email office@cpg.church

Also used to contact a priest outside of office hours.

Office Opening Times

	Morning:	Afternoon:
Monday to Friday	9am - 12.30pm	1.30pm - 4pm

Parish Database Guildford Catholic Parish has a secure on line database to record details of parishioners. Households can register through the website.

Car Parking

The church has 10 marked parking spaces below the Church. These are for users of the Hall and Church. Parking outside the Church and in the presbytery car park is for the disabled, infirm and elderly only on Sundays. Other parishioners are asked not to park in these spaces.

Further public parking is available nearby, York Road is a Pay on Foot car park. Please check roadside parking restrictions carefully, as these were recently extended to 9pm.

The Shop

The shop (also known as The Repository) is open after all Masses on Sunday for the sale of cards, candles, religious objects and Traidcraft fair trade products.



The Parish Halls

St Joseph's has excellent hall facilities below the church, with a well equipped kitchen and a dedicated sound-system and projector. The hall is licensed by Guildford Borough Council for most activities, but not for the sale of alcohol, which requires application for a special licence. To book the hall, contact the Parish Office. Charges apply.



St Philip Howard Hall

Carpeted and holds 100 people.

St Richard Hall

Hard floor and holds 125 people.

A folding partition enables both halls to be used together holding 250

Parishioners who are Sick, Disabled or Housebound

Parishioners who are ill or confined to home and would like someone to visit and/or bring them Holy Communion should contact the Parish Office. Visits may be undertaken by a priest or a deacon or a specially commissioned lay minister.

Hospital Visits

If you or a relative are admitted to hospital, please tell a member of staff that you are Catholic and if you would like a visit from a priest. The parish clergy will be informed of your admission. It would be helpful if you or a relative informed the parish office directly of your hospital admission as well.

Getting to Mass

Transport can often be arranged to and from Mass or events for the elderly, disabled or housebound who have difficulty attending otherwise. This is provided by volunteers. All enquiries should be made via the Parish Office.

How St Joseph's Works

There are a number of groups that contribute to the administration and running of The Catholic Parish of Guildford and to pastoral care. In addition there are certain groups that are specific to St Joseph's. Arrangements are currently evolving following the recent establishment of the single Guildford parish. Information about these groups can be found on the parish website. www.cpg.church

Parish Priest (Moderator). The parish priest is responsible for the overall governance of the Catholic Parish of Guildford.

Parish Pastoral Council. This group relates to the whole parish. It supports the parish priest in understanding issues facing each community and in communicating and coordinating the sacramental, pastoral and evangelical activities across the parish. The group includes representatives from each of the Sunday Masses at each of the four churches.

Parish Finance Committee. This group relates to the whole parish. It supports the parish priest in all matters of finance, budgets, property and employment.

Groups specific to individual communities include, for example

St Joseph's Finance and Property management committee. This group oversees the management and maintenance of the buildings

St Joseph's Church Support team- in process of establishment.

Liturgy Group. Coordinates the liturgy in St Joseph's particularly for major feasts and celebrations.

Communication Group. Responsible for the production of the welcome brochure at St Joseph's as well as the notice boards at the entrance of the church.

Volunteers



Volunteers are absolutely essential to enable a church the size of St Joseph's to function. We are privileged to have an active volunteer community. Volunteers contribute to the liturgical, pastoral and administrative functions as well as the life of the community. Getting involved is a way to deepen and live your faith and a great way to meet fellow parishioners and serve your community. St Joseph's always welcomes new volunteers. If you are interested please complete the form on page 11.

Safeguarding Children and Vulnerable Adults

St Joseph's is committed to safeguarding children and vulnerable adults. If you have any concerns about safeguarding please contact the Parish Priest. Anyone wishing to work with vulnerable groups in the parish has to be DBS (previously CRB) checked.

Margaret Powell is assisting the parish with all safeguarding matters. She can be contacted through the parish office or on email-mgtpowell84@gmail.com

Helping and Volunteering Form

As a member of St Joseph's, I am interested in helping in the following ways:

Liturgical Ministries		Volunteering	
Welcoming	<input type="checkbox"/>	Church cleaning	<input type="checkbox"/>
Reader	<input type="checkbox"/>	Repairs and Maintenance	<input type="checkbox"/>
Extraordinary Minister of Holy Communion	<input type="checkbox"/>	Driving people to Mass	<input type="checkbox"/>
Sacristan	<input type="checkbox"/>	Counting collections	<input type="checkbox"/>
Altar Server	<input type="checkbox"/>	Helping with coffee after Mass	<input type="checkbox"/>
11am Mass Choir	<input type="checkbox"/>	Helping in the Shop	<input type="checkbox"/>
6pm Mass Band	<input type="checkbox"/>	Helping with the Youth Ministry	<input type="checkbox"/>
Children's Liturgy	<input type="checkbox"/>	Supporting the elderly	<input type="checkbox"/>
		Helping with communications	<input type="checkbox"/>
Sacramental Preparation			
Baptism	<input type="checkbox"/>	RCIA (Helping people find their way into the catholic church)	<input type="checkbox"/>
Marriage Preparation	<input type="checkbox"/>		
First Holy Communion	<input type="checkbox"/>	Confirmation	<input type="checkbox"/>
Other ways I can help			

Name _____

Address _____

Post Code _____

Telephone _____ Mobile _____

Email _____

Please hand this form in to the Parish Office

Preparing for the Sacraments

A full programme of preparation for the sacraments is run across the Guildford Catholic Parish. Information is on the website www.cpg.church or available from the Parish Office.

Baptism

Parents wishing to have their children baptized should register on the church data base and complete the online application, a member of staff will then contact them. Attendance at the Baptism preparation course is required.

There is an administration fee which includes the cost of producing the Baptism Certificate, personalised booklets for the service and a candle. A separate donation to the celebrant is customary.



First Holy Communion



This programme is for children in school year 3 and above. Applications open in the summer and the course starts in September. The programme supports parents as the first teachers of the faith. It runs parents evenings and family faith days to accompany families on the journey towards first Reconciliation in Lent and First Communion in May. More information is provided on the website.

There is a charge to cover the cost of resources.

Confirmation

The Confirmation programme is for young people in school year 10 or above. Applications open in the autumn for a January start. Information is provided on the website. There are a number of preparatory sessions before the young person is invited to make a commitment to the course. The sessions run on Sunday evenings around the 6pm Mass.



Preparation for Marriage

Couples planning to be married in the Church must give at least six months' notice. They should contact the parish office. An information booklet may be downloaded from the website setting out the requirements.

Preparatory courses for engaged couples are run regularly by a team of married couples.

The first three sessions are held weekly on Wednesday evenings. The final session is held on a Sunday and includes a blessing of the engagement ring at Mass.

Rite of Christian Initiation of Adults

The purpose of RCIA is to prepare adults for Baptism, Confirmation and Holy Communion so that they can be received into membership of the Church. Adults are introduced to the teaching and practice of the Catholic Church. After an 'Enquiry Period', they are invited to make a commitment. Courses begin in September each year and run to June.

Information is published on the website and in the newsletter.



Schools

There are a number of Catholic schools in the Guildford area:

St Peter's Catholic Comprehensive School	www.st-petersschool.co.uk
St Joseph's Catholic Primary School	www.st-josephs-guildford.surrey.sch.uk
St Thomas of Canterbury Catholic Primary School	www.stthomassurrey.co.uk
Rydes Hill Preparatory School	www.rydeshill.com

Children, Youth and Families

The Children, Youth and Families programme is a major feature of the Catholic Parish Guildford. It is run by a full time coordinator and includes a number of programmes

Aseel Gilbert – Coordinator

Aseel was the youth worker at St Joseph's for five years and then youth coordinator for the Guildford Catholic Parish. She has now been appointed to the broader role leading the Children, Youth and Families programmes. This includes the First Communion and Confirmation programmes as well as the Guildford Youth Ministry. Aseel is supported by an assistant-Lucy Hall.



Parenting Programmes

Bringing up children is one of the most important and most difficult roles in life. The Children, Youth and Families team run parenting programmes for parents of children aged 0-6 and 7-11 as well as for parents of teenagers, using the Family Caring Trust resources. This is an opportunity to meet other parents and get support. Information on how to sign up is on the website.

Toddlers Group

Provides a caring, safe play environment for babies and toddlers in a welcoming, friendly and respectful environment where parents and carers can meet. It is run by volunteers in St Joseph's Hall on Monday mornings from 10.00am-11.30 am. There is a small charge per session.



Looking after Small Children at Mass

Mass is for all but occasionally small children can get restless. The side chapel on the right hand side of the Church is available as a facility where parents can take children to calm down, after which they are then encouraged to re-join the congregation. There are some age appropriate “busy bags “at the back of the church which contain a number of things that may help parent and child enjoy Mass. They can be borrowed but please ensure they are returned at the end of the service.



GYM – Guildford Youth Ministry

The Guildford Youth Ministry is a particular strength of Guildford. It offers young people aged 7-18 years opportunities to grow in faith and love of the Church in a fun and dynamic way. It includes three programmes:

GYM-jams

A group for children from the Catholic Parish of Guildford in school years 3-5 (ages 7-9 years). It takes place on Mondays at 5.30-7pm in St Joseph’s hall. For more information see website: www.cpg.church/youth

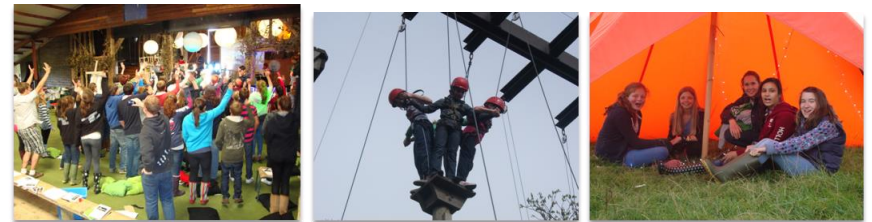
jGYM and GYM

jGYM and GYM groups for school years 6-9 and 10-13 respectively take place in St Joseph’s Hall every Friday evening during term time. There is a small charge per jGYM session to cover the cost of the meal, but GYM is free. For information and to register please see website www.cpg.church/youth



jDamascus and Damascus

Weekend retreats for young people aged 10-13 and 14-18 respectively to give young people from Guildford and beyond an opportunity to discover their faith in a fun, dynamic and creative way. The programme contains a mix of music, worship and scripture brought to life, creative workshops, prayer and outdoor activities. More information at www.DamascusYouthEvent.com



Adults

Prayer and Spiritual Growth

Home Groups

Are open to all members of Guildford Catholic parish. They provide members with an opportunity to deepen their faith and experience a greater reality of Christian family as a complement to their weekly attendance at Mass. There are over 100 parishioners in six Home Groups which meet fortnightly on Thursday evenings in homes during term time. As well as the regular meetings, there is a programme of social and spiritual events. Contact Parish Office or see the website for information on how to join a group.

From time to time programmes or talks providing adult formation are held, e.g. Alpha Course. Information about such courses is published on the website and in the weekly newsletter.

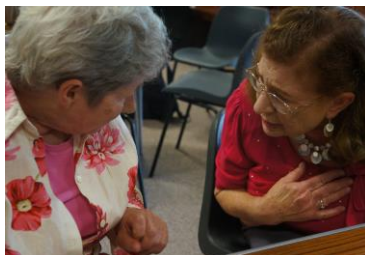
Rosary Group

Meets in St Joseph's immediately after weekday Mass to recite five decades of the Rosary for a variety of intentions. All are welcome.

Social

Tuesday Club.

Catering for senior parishioners from the Parish. The club meets in St Joseph's Hall on the third Tuesday of each month. The main feature is a delicious lunch prepared by volunteers and is followed by a talk on an interesting topic or other form of entertainment. Tuesday Club is a great opportunity to meet fellow parishioners and to bring along friends. There is a modest charge for the lunch.



Short Mat Bowls

A group that meets on Thursday afternoons from October to April in St Joseph's Hall to enjoy a social gathering and play Short Mat Bowls.



Other Groups and Organisations

St Joseph's is an active community and many parishioners are involved in various groups and organisations. Here are some of them:

Prayer and Spiritual Growth

Teams of Our Lady	A worldwide movement which supports marriage and helps couples to sustain their life together. There are three teams in the Parish which consist of four or five couples who meet once a month over a meal.
Prayer Group	Meets fortnightly on a Thursday evening and is open to anyone.
Christian Meditation Group	Meets every Wednesday in the side chapel after Mass for silent prayer in a structured setting.
Fathers' Prayers	Meets every Thursday morning at 7 am to pray for children followed by breakfast and fellowship.
Mothers' Prayers	For the Parish of Guildford. First and third Thursday of the month at St Mary's, Rydes Hill at 9.45 am. For more information or to register interest see website.
Direction for Our Times	A programme of spiritual direction for Catholics.

Other organisations within the parish

Catenians	An association of Catholic men based on faith, family and fellowship.
Knights of St Columba	An association for Catholic men to promote the social doctrine of the Catholic Church.

Contact details for these groups and organisations are available from the parish office.

Social Action

Footsteps	A drop-in centre which operates in the town on a Sunday evening for the homeless and disadvantaged – many parishioners help.
Number 5	A night shelter staffed by volunteers, many of whom belong to St Joseph's.
St Vincent de Paul	Works with individuals suffering from poverty and hardship on a local basis.
Street Angels	Support late night clubbers in the town centre of Friday and Saturday nights.
Besom	Works with Social Services to decorate someone's room or tidy their garden. This is a Home Group project.



Pilgrimages to Lourdes

A&B Diocesan Pilgrimage	Join 800 pilgrims from across the Diocese with the bishop every July.
HCPT	Takes special needs children and young adults to Lourdes at Easter. Group 2's home church is St Joseph's.

Multi-Cultural Church

As the population has changed in recent years many different nationalities are represented among the community at St Joseph's. Parishioners from over 50 nations worship here. We welcome and value this diversity which adds strength to our community.

The annual International Mass is a major celebration. A Polish Mass is held twice each month and from time to time Mass is celebrated in Spanish. Visiting priests from all parts of the world have come to Guildford over the years.

Here are some greetings from some of the main groups represented in our church:

Malayalam



ഞങ്ങൾ ജീവിക്കാൻ ഗിൽഫോർഡ് തിരഞ്ഞെടുക്കാൻ ഒരു മുഖ്യ കാരണം ഈ സേയിന്റ് ജോസഫ് ദേവാലയം ആണ്



"One of the main reasons we selected Guildford to live is this St. Joseph's Church." Sajan & Juby Jacob

Poland



Cześć, mam na imię Asia.
Witaj w parafii św. Józefa :)



"Hi, my name is Joanna. Welcome to St. Joseph's." Joanna Krzyszton

Colombia



Hola, somos Omar, Alexandra y nuestro hijo Samuel de Colombia.



"Hi, we are Omar, Alexandra and our son Samuel and we are from Colombia." Martinez Family

Supporting your church through donations

St Joseph's, in common with all Catholic parishes, is entirely self-supporting financially. It depends on the generosity of its parishioners for the funds necessary to run the parish.

Running costs include for example, accommodation and expenses of the clergy, staff salaries, upkeep and maintenance of buildings which can be very expensive and the very many other costs that are necessary for development and the smooth running of the parish. And like all parishes we make a contribution to the Diocese. We urge you to give generously in order to support the work of the Church.

How to Contribute

Giving regularly

Setting up a standing order is the best way of supporting your parish financially. It cuts down on administration and enables us to plan knowing that we have a reliable source of income. All you have to do is to complete the **Standing Order** form opposite and hand it in to the Parish Office.

Gift Aid

If you pay UK tax (Income and Capital Gains Tax) then the best way you can help the Parish financially is to join the Gift Aid programme. The Parish is then able to reclaim 25p for every pound of your contributions and donations to St Joseph's at **no additional cost to you**.

To take advantage of this concession by the government to encourage charitable giving, please tick the **Gift Aid** Declaration on the standing order form and hand it in to the Parish Office or request weekly gift aid envelopes. Yellow all-purpose Gift Aid envelopes are available in the pews. St Joseph's Gift Aid coordinator can be contacted via the parish office for any queries.

Weekly Offertory

A regular collection is taken at all Sunday Masses. If you would like to send a cheque, please make it payable to St Joseph's Catholic Church.

Second Collections at Mass

Guildford Parish supports a number of charities and activities through a retiring collection at Sunday Masses.

Foundation Masses

An arrangement can be made to have a Mass offered annually for a particular intention for a number of years. A donation is usually made. Families sometimes request Foundation Masses following the death of a loved one

Legacies

If you would like to remember St Joseph's in your will, please speak to Father Colin and he will provide more details, or go to the Parish website.

Every aspect of your giving is treated with the utmost confidentiality.



St Joseph's Standing Order Form

Please fill out in Block Capitals and hand it in to the Parish Office

giftaid it

To the Manager of _____ (Bank Name)

Bank Address

Please pay HSBC Bank plc, 69 Pall Mall, London, SW1Y 5EY A & B Diocesan Trust
Registered Charity No. 252878 (Sort Code: 40-05-20, Account No. 91079379)
St Joseph's Guildford parish the sum of:

£ _____

Every month, starting on the ___/___ /___, until I notify you otherwise.
This will cancel any previous standing order to this account.

Name _____

Address _____

Postcode _____

Email _____

Account Number

Sort Code - -

Gift Aid Declaration Using Gift Aid means that for every £1 you give, St Joseph's can claim back an extra 25p from the Inland Revenue - at no extra cost to you. This makes your gift go much further!

I am a UK taxpayer and I confirm that I want Arundel and Brighton to reclaim tax on the donations made within the last four tax years (6 April to 5 April) and all future donations. I understand that if I pay less Income Tax and/or Capital Gains Tax than the amount of Gift Aid claimed on all my donations in that relevant tax year then it is my responsibility to repay any difference.

I am not a UK taxpayer

Signature _____ Date _____

Catholic Parish Guildford Mass & Reconciliation Times*



Weekend Mass

Saturday		7pm	6pm	
Sunday	8am 11am 6pm	11am	9.30am	9am

Weekday Mass

Monday		9.15am	7.30pm	see
Tuesday	10am			website
Wednesday	10am	9.15am		for
Thursday		9.15am	10am	weekday
Friday	10am	10am	8.45am**	Masses
Saturday	10am			

** At St Peter's Comprehensive School (during term time).

Check the weekly schedule of Masses on the website or newsletter for changes to Mass times.

Mass at the Royal Surrey County Hospital Chapel - Tuesdays 4pm

Mass at the University of Surrey Quiet Centre - Sundays 6pm (during term time)

Holy Days of Obligation See newsletter and website for times of Masses

Sacrament of Reconciliation***

Saturday	11am-12pm	6.15pm-6.45pm	First Saturday 5.15pm-5.45pm	
Sunday	Third Sunday 5.15pm-5.45pm			
Monday			8-9pm	

* Please check the website for any variations or special occasions.

*** Priests are available at other times by appointment.

There are special parish services of Reconciliation during Lent and Advent.